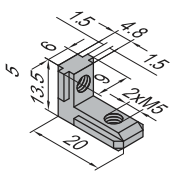


Connecting Elements

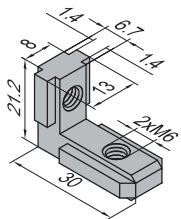
Inner Bracket (with top thread)

Inner bracket is with low cost and high efficiency, widely used for the assembly of door, window and protection frame.

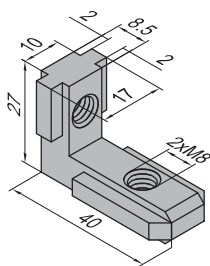
Material: bracket-diecast zinc top thread-zinc plated steel



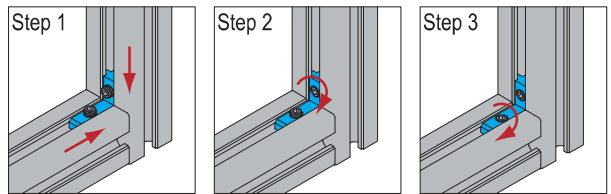
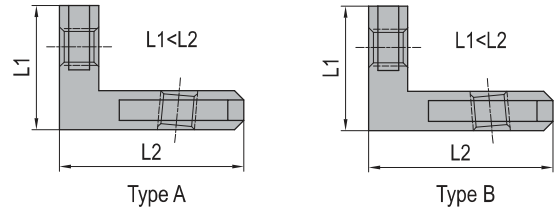
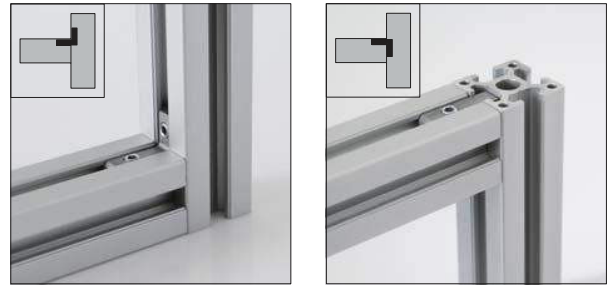
- M5x6
- Inner Bracket-6-A  
3.41.06A
- Inner Bracket-6-B  
3.41.06B



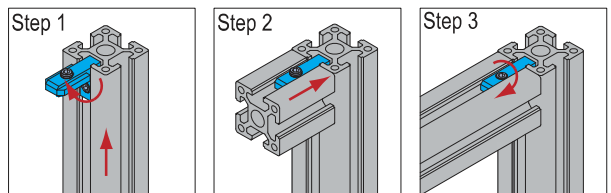
- M6x8
- Inner Bracket-8-A  
3.41.08A
- Inner Bracket-8-B  
3.41.08B



- M8x10
- Inner Bracket-10-A  
3.41.10A
- Inner Bracket-10-B  
3.41.10B



set parts in position    tighten L1 top thread    tighten L2 top thread



Description	Mass (g/pcs)	Part No.
Inner Bracket-6-A (with top thread)	6	3.41.06A
Inner Bracket-6-B (with top thread)		3.41.06B
Inner Bracket-8-A (with top thread)	18	3.41.08A
Inner Bracket-8-B (with top thread)		3.41.08B
Inner Bracket-10-A (with top thread)	36	3.41.10A
Inner Bracket-10-B (with top thread)		3.41.10B

